

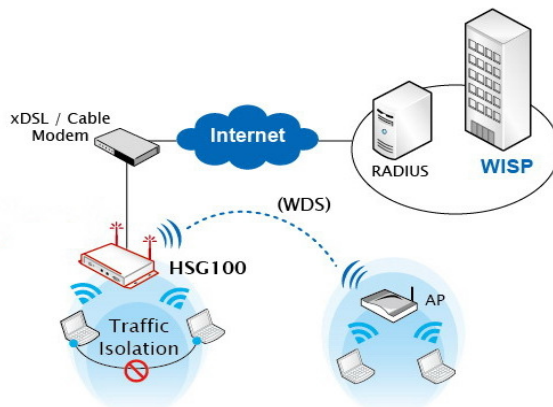




The **4ipnet HSG100** is the most economical yet feature-rich **Wireless Hotspot Gateway**, targeting mini-size stores who want to provide small, single-point wireless Internet access service. HSG100 is a perfect choice for beginners to run hotspot businesses. It does not cost a fortune to buy a pile of equipment, nor does it take the skills of an expert to glue multiple applications out of multiple freeware.  

Feature-packed for hotspot operation, HSG100 comes with **built-in 802.11 b/g access point, web server and web pages for clients to login, easy logo-loading for branding a hotspot store, simple user/visitor account management tool, payment plans, PayPal credit card gateway, traffic logs, IP sharing** and etc. To open a hotspot store is at finger tips with HSG100 connecting to the Internet pipe via ADSL/ Cable/ Satellite modem. HSG100 also brings in an extra advantage - the wall-mountable, dust-proof (IP50) metal housing.

For a **self-proprietor** who owns one or several small shops, serving wireless internet service is no magic via HSG100. Many auto-service shops and dental clinics find an HSG100 in service makes their customers' waiting time a breeze. Small coffee shops can offer time-based hotspot service by compliment coupons or paid by hours at ease. For small professional offices such as accounting or law firms who demand high-level network security, a standalone HSG100 enables the offices to provide managed Internet service to their clients or visitors in an isolated fashion, free of charge, while securely preventing unauthorized access to the intranet.



FEATURES & BENEFITS

Easy Installation and Operation

- Support various broadband deployment options (T1, DSL, Cable) via static IP, DHCP and PPPoE
- Integrated access point enables Wi-Fi access and eliminates the need for additional device
- Built-in user database provides sufficient account capacity for different operation scenarios
- Work on-demand account generator to provide user accounts for visitor-based, on-demand operations

Integrated Security Features

- Standards-based data encryption and user authentication: WEP, WPA, WPA2, IEEE 802.1X
- Secure guest and administrator access using web-based login and administration over SSL
- Configurable packet filtering policies enhance data traffic security
- Built-in DoS protection prevents malicious hackers from collapsing the network

Effective User Management

- Complete authentication mechanism blocks unauthenticated users from gaining access to the network
- Role-based and policy-based control policies enhances the protection against malicious users
- "On-line user list" monitors real-time status of each individual user
- Allow session expiration control for On-demand users by time basis

Flexible Accounting and Billing

- Programmable billing profiles allow operators to customize the billing plans for On-demand users
- Bandwidth control enables class of service for different levels of users and maximize profits
- Detailed per-user traffic history log for analysis and record keeping

Networking

- Support Router, NAT mode
- Support static IP, DHCP and PPPoE on WAN interface
- Support IP Plug and Play (IP PnP)
- Built-in DHCP Server and support DHCP Relay
- Support NAT:
 - (1) DMZ Server Mapping
 - (2) Public Accessible Server
 - (3) Port and IP Redirect
- Configurable static route
- Support email service via designated email server
- Support Walled Garden
- Support Walled Garden Ad List to post Advertisement website links on user login portal page
- Support MAC Address Pass-Through
- Support Ethernet connection to external terminal servers

Security

- Support security standards: WEP (64/128/152 bits), WPA/WPA2-PSK, IEEE 802.1X, and TKIP & AES Cipher auto negotiation
- Support VPN Pass-Through (PPTP)
- Support DoS attack protection
- Support Layer 2 isolation
- Support MAC Access Control List
- Configurable user Black List
- Allows MAC address and user identity binding for local user authentication

User Management

- Support 100 local accounts
- Support 500 on-demand accounts for visitors
- Simultaneous support for multiple authentication methods (Local, RADIUS*2, and On-demand)
- Support local account roaming
- Policy-based access control (per-role assignments based on Firewall Policies, Routing, Login Schedule, Bandwidth and Session)
- User Session Management:
 - (1) SSL protected login portal page
 - (2) Support multiple logins with one single account
 - (3) Session idle timer
 - (4) Session and account expiration control
 - (5) Login time frame control
 - (6) Session limit
- Import/Export local and on-demand accounts from/to a CSV file

Monitoring and Reporting

- Online status monitoring of users
- Uplink (WAN) connection failure alert
- Support SYSLOG server for diagnosis and troubleshooting
- Support User Logs for traffic recording
- Support user traffic session (TCP/UDP) logging
- Event Log

System Administration

- Web-based management UI
- Customizable login and logout portal page
- SSH remote management
- Remote firmware upgrade
- Console management
- NTP time synchronization
- Backup and restore the system configuration
- SNMP v1/v2c

Accounting and Billing

- Provide billing plans for On-demand accounts
- Various on-demand account types: Usage, Duration, and Cut-off
- Session expiration control for On-demand accounts by time
- Detailed per-user traffic history based on time for both local and On-demand accounts
- Traffic history report in an automatic email to administrator
- Support credit card payment via external payment gateway (PayPal)
- Support RADIUS accounting
- Support RADIUS VSA for volume-based quota of an external RADIUS server
- On-demand account batch creation
- Send automatic e-mail to report User Log, on-demand User Log, and Monitor IP status respectively

Wireless Radio Specifications

- Wi-Fi standard: IEEE 802.11b/g in 2.4GHz frequency band
- Modulation: OFDM, DSSS, CCK
- Wireless Interface: 1 x 802.11 b/g (11/54 Mbps)
- 2 x 5dBi(US)/2dBi(EU) detachable (SMA Connector) field-replaceable Antenna
- RF output power: 100mW EIRP
- Number of multiple SSIDs: 2
- Number of WDS links: 2

Hardware Specifications

- Metal case compliant with IP50 Standard
- WAN Port: 1 x 10/100 Base-T PoE compliant with IEEE 802.3af
- LAN Port: 1 x 10/100 Base-T
- Console Port: 1 x DB9
- LED Indicators: 1 x Power, 1 x WAN, 1 x LAN, 1 x WLAN

Physical and Power

- AC Input: 100~240 VAC, 50/60 Hz
- DC Output: 12V, 1.5A
- Form factor: Wall Mountable
- Dimensions (W x D x H): 8.0" x 5.3" x 1.4" (204 mm x 134 mm x 35 mm)
- Weight: 1.3 lbs (0.61 kg)

Environment

- Operation Temperature: -30 ~ 70 °C (-22 ~ 158 °F)
- Storage Temperature: -40 ~ 85 °C (-40 ~ 185 °F)
- Operation Humidity: 10% ~ 80% (Non-condensing)
- Storage Humidity: 5% ~ 90% (Non-condensing)

Certifications

- FCC, CE, RoHS compliant

Package Contents

- 4ipnet HSG100 main unit x 1
- CD-ROM (User's Manual and QIG) x 1
- Quick Installation Guide (QIG) x 1
- Null Modem Connector x 1
- Console Cable x 1
- Ethernet Cable x 1
- Ground Cable x 1
- Power Adaptor (DC 12V) x 1
- Antenna x 2
- Screw pack x 1

** Specifications subject to change without notice